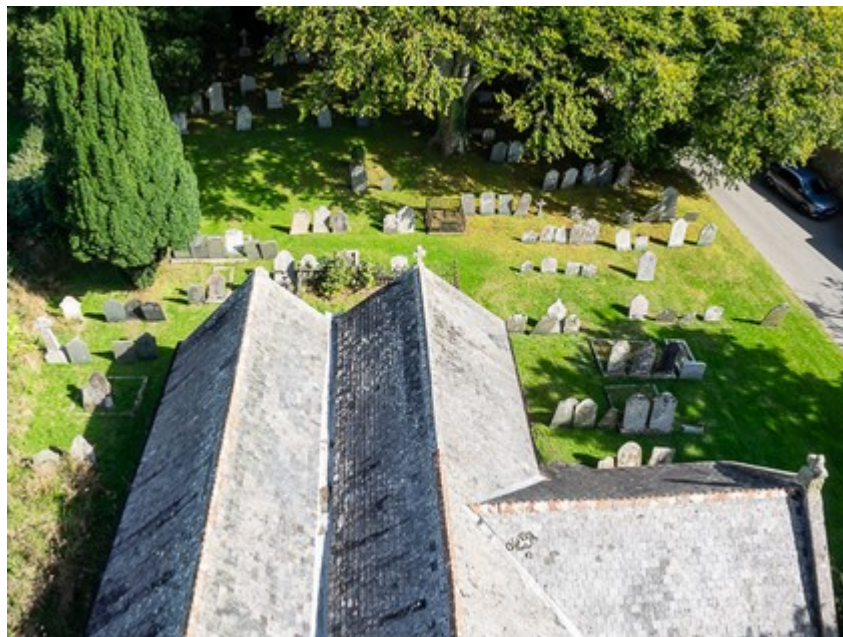


## Church Heritage Opening, 18th September 2022



*(1) One of the displays*



*(2) Pillaton churchyard from the tower*



*(3) Looking north from the church tower with Caradon and Kit Hill in the distance. (Click on image to enlarge)*



*(4) East from Pillaton church tower with Dartmoor just visible on the horizon. (Click on image to enlarge)*



*(5) The view south from Pillaton church tower. (Click on image to enlarge)*



*(6) To the west over the village with Caradon again in background right. (Click on image to enlarge)*